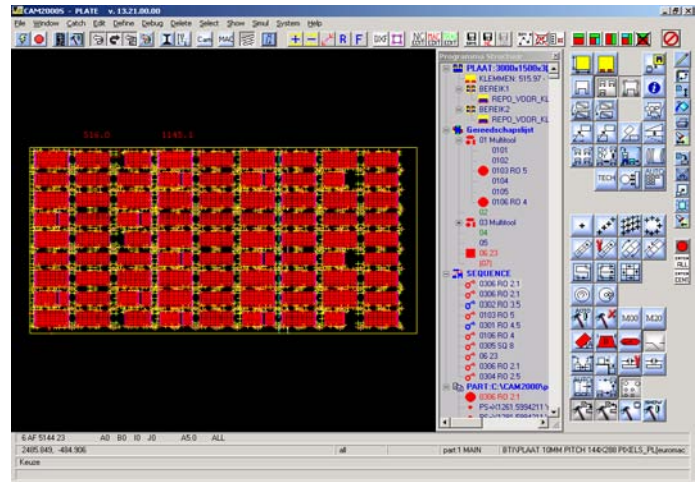
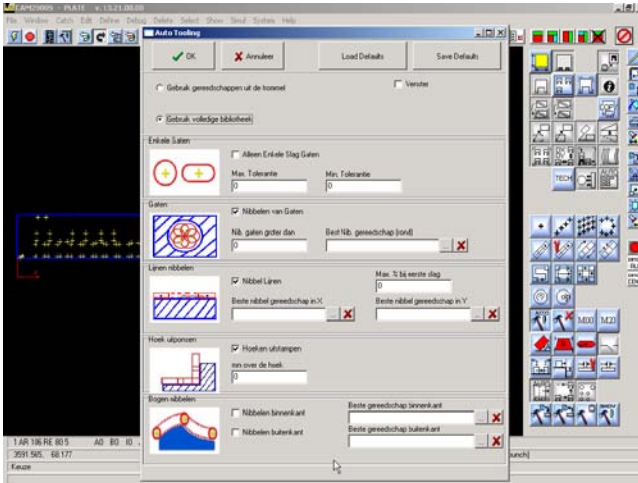


Advanced Turret Interface

The turret for punching machines can be made up starting from individual tools or multitools. Multiple turret configurations can be saved and loaded. Tools can be handled with drag-and-drop simplicity. Sequencing of the tools can be handled automatically or manually.

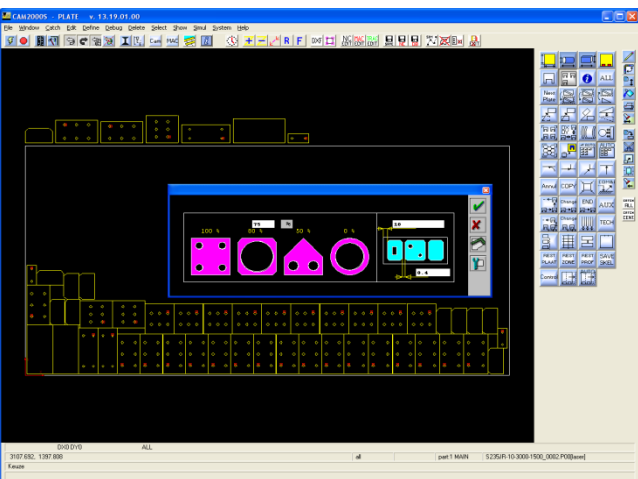
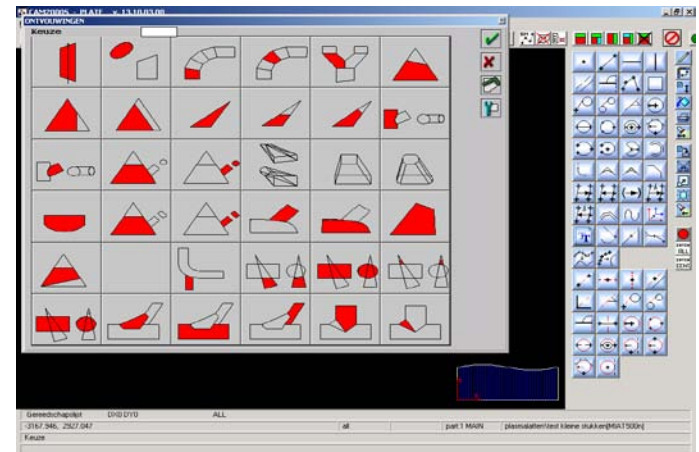


Automatic Punching

Punching operations can be defined manually or automatically. A set of rules can be set to allow CAM2000S to select the tools to recognize holes and contours for nibbling and punching.

Development of Tubes

A module integrated for the calculation of the intersections of cones, cylinders, rectangle-round, pyramids, etc ... makes it possible to draw the unfolded shape. The result can be used immediately for laser cutting, plasma cutting, or other operations.



Rectangular Nesting

Rectangular forms can be nested automatically for the use of common cuts. Rectangular nesting can also be combined with true shape nesting, to obtain the best results for cutting time and usage of material.



Advanced Laser Solutions

Superior CAD/CAM/CIM
Software, Training, & Support

104 Queens Ct.
Aiken, SC 29803
Tel.: (704) 460-3506
Fax: (803) 226-0713
E-mail: info@advancedlasersolutions.net
[Http://www.advancedlasersolutions.net](http://www.advancedlasersolutions.net)