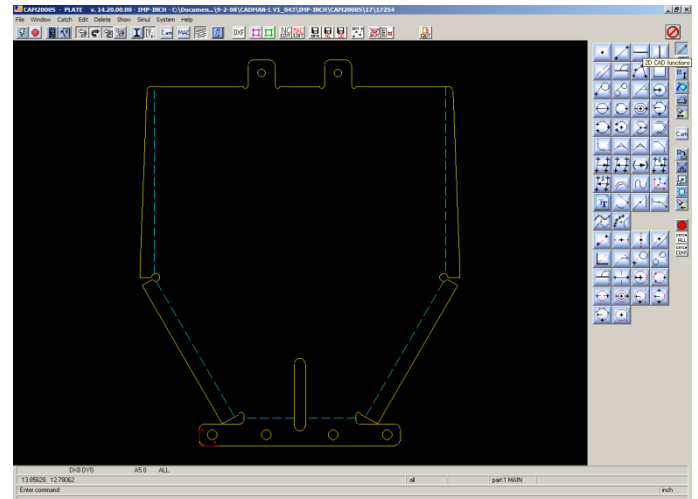
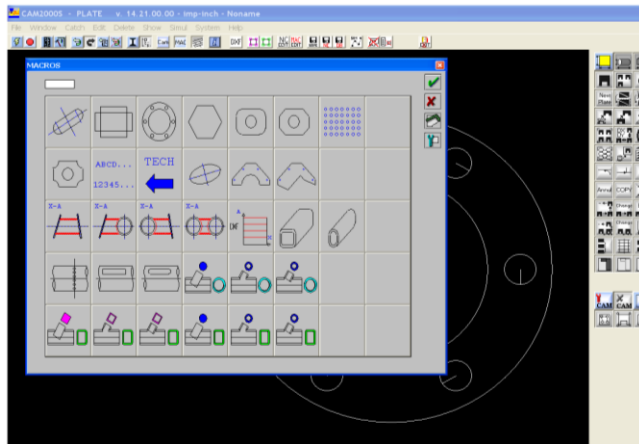


Integrated CAD Functionalities

With the integrated CAD any geometry can be entered quickly. There are advanced functions for transformations, splines, text, geometry verification utilities and so much more. Industry standard file formats can be imported and verified quickly and easily. Drag & drop DXF or DWG files right into CAM2000s with interactive layer control.

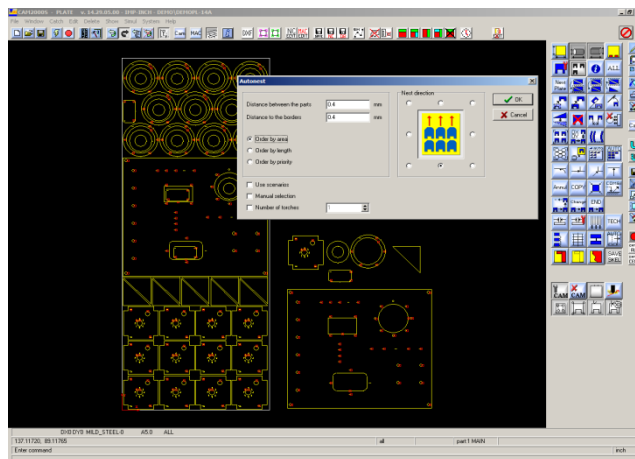


Parametric Macros

Creation and use of parametric macros has never been easier. Macros can create drawings, machine cycles or complete programs. With the powerful and simple macro language there are no problems to program simple or complex geometries.

Technology Data

For each type of machine (laser, plasma, oxyfuel, waterjet, etc ...) it is possible to define specific technology parameters for each material type and thickness.



TECH	THICK	Inloop	Uitloop	Snelheid	M	A	Actiervel	NUMMI	LEI TFI	SPRINT	VOORS				
AIS1004-1D	15	5	0	1.36	0	0.4	5	5	0	10	10	3239	750	0	0
AIS1004-2B	0.8	5	0	0.15	0	0.25	5	5	0	10	10	4229	750	1	0
AIS1004-2B	1	5	0	0.15	0	0.25	5	5	0	10	10	4229	750	1	0
AIS1004-2B	1.25	5	0	0.15	0	0.25	5	5	0	10	10	4230	750	1	0
AIS1004-2B	1.5	5	0	0.15	0	0.25	5	5	0	10	10	4230	750	1	0
AIS1004-2B	2	5	0	0.15	0	0.25	5	5	0	10	10	4231	750	1	0
AIS1004-2B	2.5	5	0	0.15	0	0.25	5	5	0	10	10	4232	750	1	0
AIS1004-2B	3	5	0	0.15	0	0.25	5	5	0	10	10	4233	750	1	0
AIS1004-2B	4	5	0	0.15	0	0.25	5	5	0	10	10	4234	750	0	0
AIS1004-2B	5	5	0	0.3	0	0.3	5	5	0	10	10	4235	750	0	0
AIS1004-2B	6	5	0	0.3	0	0.3	5	5	0	10	10	4236	750	0	0
AIS1004-ANS	1	5	0	0.15	0	0.25	5	5	0	10	10	4229	750	1	0
AIS1004-ANS	1.5	5	0	0.15	0	0.25	5	5	0	10	10	4230	750	1	0
AIS1004-ANS	2	5	0	0.15	0	0.25	5	5	0	10	10	4231	750	1	0
AIS1004-ANS	0.5	5	0	0.15	0	0.25	5	5	0	10	10	4229	750	1	0
AIS1004-BA	0.8	5	0	0.15	0	0.25	5	5	0	10	10	4229	750	1	0
AIS1004-BA	1	5	0	0.15	0	0.25	5	5	0	10	10	4229	750	1	0
AIS1004-BA	1.5	5	0	0.15	0	0.25	5	5	0	10	10	4230	750	1	0
AIS1004-BA	2	5	0	0.15	0	0.25	5	5	0	10	10	4231	750	1	0
AIS1004-BA	0.8	5	0	0.15	0	0.25	5	5	0	10	10	4229	750	1	0
AIS1004-GE B0	1	5	0	0.15	0	0.25	5	5	0	10	10	4229	750	1	0
AIS1004-GE B0	1.5	5	0	0.15	0	0.25	5	5	0	10	10	4230	750	1	0
AIS1004-GE B0	2	5	0	0.15	0	0.25	5	5	0	10	10	4231	750	1	0
AIS1004-320	0.5	5	0	0.15	0	0.25	5	5	0	10	10	4229	750	1	0
AIS1004-320	0.8	5	0	0.15	0	0.25	5	5	0	10	10	4229	750	1	0
AIS1004-320	1	5	0	0.15	0	0.25	5	5	0	10	10	4229	750	1	0

True Shape Nesting

Interactive and automatic nesting can be combined. You can nest the large parts interactively, and then let CAM2000s add the small parts automatically. Minimum waste can be obtained in a fast and effective way.



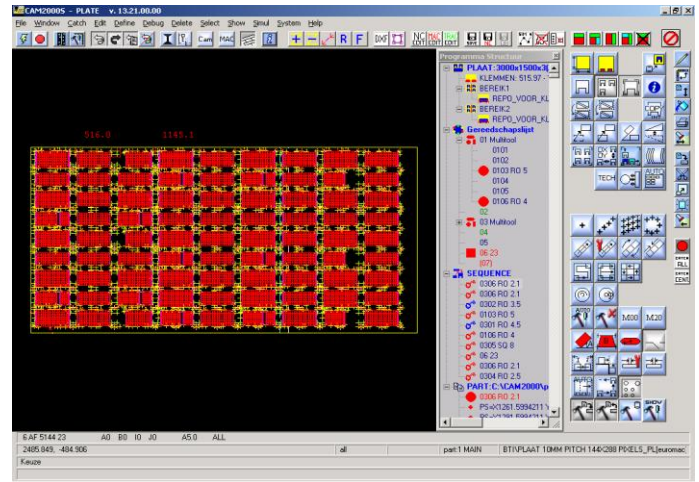
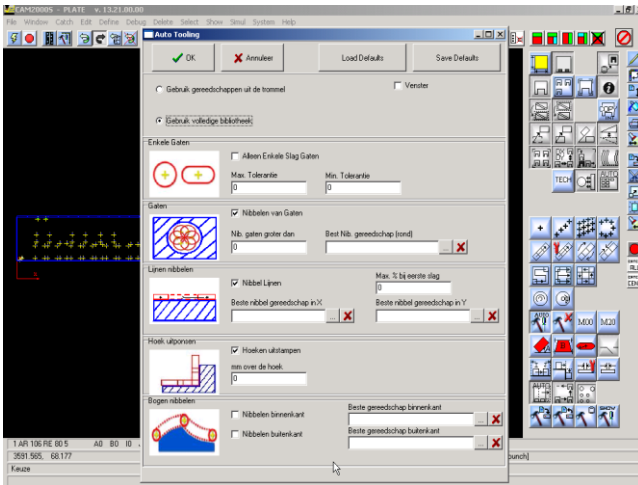
Advanced Laser Solutions

Superior CAD/CAM/CIM
Software, Training, & Support

306 Howie Mine Rd.
Waxhaw, NC 28173
Tel.: (704) 460-3506
E-mail: info@advancedlaser.com
<http://www.advancedlaser.com>

Advanced Turret Interface

The turret for punching machines can be made up starting from individual tools or multitools. Multiple turret configurations can be saved and loaded. Tools can be handled with drag-and-drop simplicity. Sequencing of the tools can be handled automatically or manually.

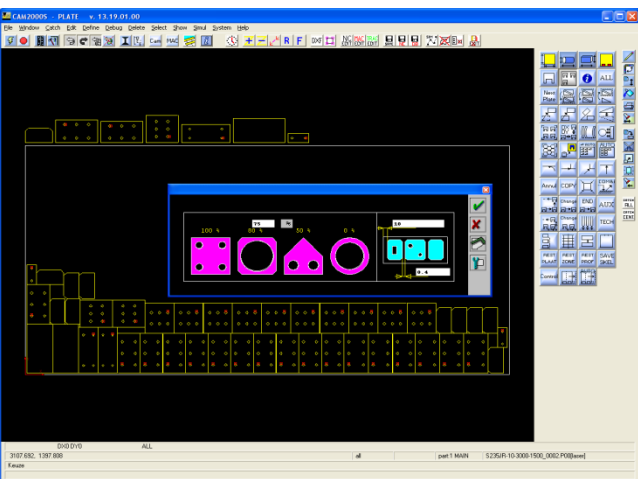
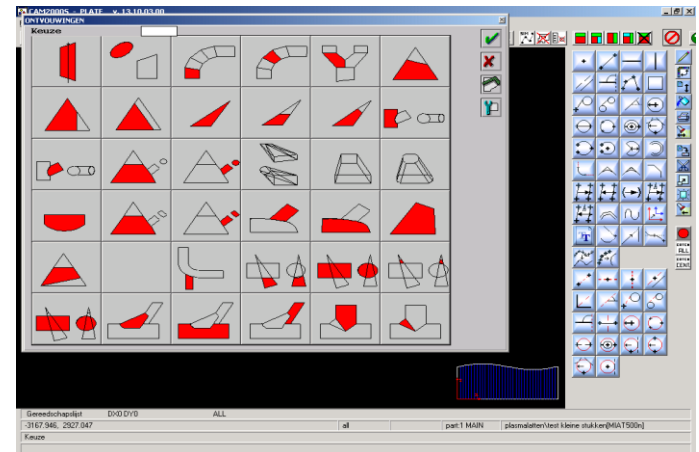


Automatic Punching

Punching operations can be defined manually or automatically. A set of rules can be set to allow CAM2000S to select the tools to recognize holes and contours for nibbling and punching.

Development of Tubes

A module integrated for the calculation of the intersections of cones, cylinders, rectangle-round, pyramids, etc ... makes it possible to draw the unfolded shape. The result can be used immediately for laser cutting, plasma cutting, or other operations.



Rectangular Nesting

Rectangular forms can be nested automatically for the use of common cuts. Rectangular nesting can also be combined with true shape nesting, to obtain the best results for cutting time and usage of material.



Advanced Laser Solutions
Superior CAD/CAM/CIM
Software, Training, & Support

306 Howie Mine Rd.
Waxhaw, NC 28173
Tel.: (704) 460-3506
E-mail: info@advancedlasersolutions.net
Http://www.advancedlasersolutions.net